



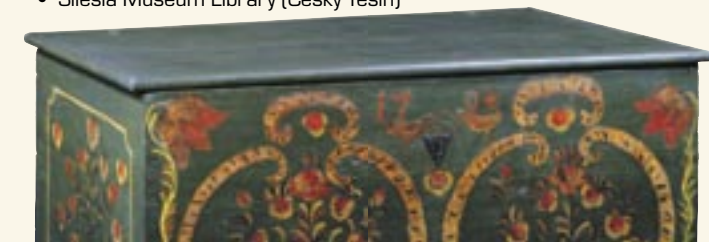
Těšín Regional Museum

The tradition of museum documentation of the Těšín Silesia historical territory started in 1802 when the collections of L.J.Šeršníka, the founder of the oldest museum in Silesia, were opened to the public. The museum in Český Těšín was successfully founded again in 1948. It is focused on documentation of the Těšín Silesia historical territory and its collection contains 200,000 items. In particular it possesses a unique collection from the areas of ethnography, artistic crafts, history, botany and mineralogy. Of particular interest is the Tranoscius collection of the Těšín native poet, Jiří Tránovský (1592-1637). A long-term exhibition "Pictures from Těšín Silesia's Past" shows some areas of the previous generations' everyday life and introduces the region's history, its outstanding personalities and folk culture (Těšín silver folk jewellery, Těšín mintage, "Těšínska" rifles, baroque folk crafts). The magazine "Těšínsko" is published four times a year in addition to numerous other publications. The Těšín Regional Museum participates in archeological research of the region together with the AV ČR Archeology Institute in Brno. The museum provides lecturing services as well. The main museum building, built in 1895 on Hlavní Street leading towards the border crossing with Poland, is presently under reconstruction.



Branches:

- Exhibition hall of the Těšín Regional Museum (Český Těšín)
- Musaion Havířov exhibition hall of the Těšín Regional Museum - (barrier-free access)
- Monument of the Žitovice Tragedy in Havířov-Žitovice (national cultural monument)
- Exhibition hall of the Těšín Regional Museum in Jablunkov
- Interklub Karviná exhibition hall of the Těšín Regional Museum - (barrier-free access)
- Technical Museum in Petřvald
- "Kotulova dřevěnka" (Kotula's log-house) in Havířov-Bludovice
- Exhibition hall of the Těšín Regional Museum in Orlová-Město
- Archeological excavation in Chotěbuz-Podobora
- Regional Information Centre (Český Těšín)
- Silesia Museum Library (Český Těšín)



INFORMATION

Photos from collections in museums

Těšín Regional Museum, contributory organization
Hlavní třída 15, 737 01 Český Těšín
Phone: +420 558 761 211, fax: +420 558 761 223
E-mail: muzeum@muzeumct.cz
www.muzeumct.cz

Opening hours:
Tuesday – Friday 9.00 – 17.00
Saturday 9.00 – 13.00
Sunday 13.00 – 17.00

Nový Jičín Regional Museum, contributory organization
28. října 12, 741 11 Nový Jičín
Phone: +420 556 701 156, fax: +420 556 705 393
E-mail: ovmnj@atlas.cz
www.muzeum.novy-jicin.cz

Opening hours:
Tuesday – Friday 8.00 – 12.00, 13.00 – 16.00
Saturday and Sunday 9.00 – 15.00
October – March:
Tuesday – Friday 8.00 – 12.00, 13.00 – 16.00
Sunday 9.00 – 15.00

Beskydy Museum in Frýdek-Místek, contributory organization
Hluboká 66, 738 01 Frýdek-Místek
Phone: +420 558 628 001, fax: +420 558 630 452
E-mail: muzeumbeskyd@telecom.cz
http://web.telecom.cz/muzeumbeskyd/

Opening hours:
Tuesday, Wednesday, Friday 8.00 – 12.00, 12.30 – 16.00
Thursday 8.00 – 12.00, 12.30 – 17.00
Saturday and Sunday 13.00 – 17.00

Bruntál Museum, contributory organization
Zámecké náměstí 7, 792 01 Bruntál
Phone: +420 554 717 947, +420 554 717 949
Fax: +420 554 718 558
E-mail: muzeumbruntal@iol.cz
www.bruntal-zamek.cz

Opening hours:
chateau interior exposition:
April, October: 9.00 – 12.00, 12.30 – 16.00
May - September: 9.00 – 12.00, 12.30 – 17.00
26.12. - 30.12.: 9.00 – 12.00, 12.30 – 16.00
closed on Monday
museum exposition, exhibitions:
October–April: 9.00 – 12.00, 12.30 – 16.00
May – September: 9.00 – 12.00, 12.30 – 17.00
closed on Monday

Ostrava City Art Gallery, contributory organization
Jurečkova 9, 702 00 Ostrava
Phone: +420 596 112 566, fax: +420 596 126 445
E-mail: info@gvuostrava.cz
www.gvuostrava.cz

Opening hours:
Tuesday – Friday 10.00 – 13.00, 13.30 – 18.00
open all year round



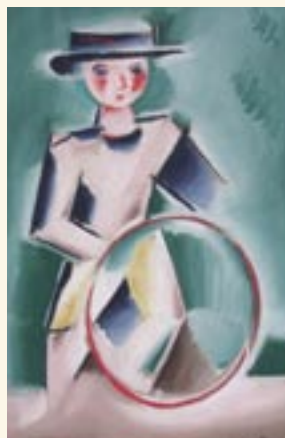
Museums



Art Gallery in Ostrava

The Art Gallery in Ostrava was founded in 1952 as a regional gallery maintaining the tradition of the "Dům umění" (Fine Arts House) Association. The building by František Fiala and Vladimír Wallenfels where the gallery is located today dates from 1926 and ranks among the jewels of Ostrava architecture. Due to the quality of its collections, the gallery is regarded as one of the five most important in the country. The collection of old art consists of individual works from the artistic centers of the 15th-18th centuries the majority being Italian paintings and valuable examples of Rudolfian Mannerism. The 19th-century Czech art collection was established with a donation of 120 works of art by Ostrava builder and patron of the fine arts, František Jurečka. It includes Classical and Romantic works together with examples of realism. Part of the collection of 20th century and contemporary Czech art is a notable regional collection. Collections of Spanish (Dominguez), Austrian (Klimt), German and Russian (Repin) painting are located in the gallery together with a large collection of drawings and graphics.

Branch: New Hall in Ostrava – Poruba



Bruntál Museum

The beginnings of the museum in Bruntál date back to the period 1898-1907. The seat of the museum was originally the Bruntál Renaissance Chateau rebuilt in Baroque style, which is a national cultural monument with a non-traditional layout in a part cir-

cular shape with a Renaissance arcade court and clock tower. The chateau exposition consists of the most valuable chateau interiors such as the chapel on the ground floor, halls on the 1st floor with valuable Rococo style mural paintings and original furnishings from the 18th to the beginning of the 20th centuries and the chateau gallery with works of art by Italian, Dutch and German masters of the 16th-18th centuries. The museum exhibitions – "Nature of the Bruntál Region" and "Guilds, Crafts and Trades of the Bruntál Region" – are located in the halls of the so-called Old Palace. Museum and art exhibitions are organized in the exhibition halls on the chateau ground floor. The chateau is surrounded by an extensive park with the structure of a „salla terena". Concerts, theatre performances, weddings and other cultural and social events take place at the chateau. The museum collection consists of over 77,000 items of cultural artefacts. Branches: "Kosárna" Karlovice, Sovinec Castle

Beskydy Museum in Frýdek-Místek

The beginnings of assembling collections in the Frýdek-Místek region are connected with the existence of the ethnographic association "Sedlišťané" which was formed in Sedlišťe in 1908. The need to present the results of their work in public led to the foundation of the first museum exposition in Frýdek. This exposition opened in 1924 and was located in the Knight's Hall of the Frýdek Chateau. A year later the museum became a branch of Czechoslovakian Agricultural Museum in Prague and its activities ceased in 1934.

In neighboring Místek, the Museum Division of Maticе Místecká was established in 1925 and in 1929 its collections were transferred to the town and opened to the public. After the war the museum



of the united town of Frýdek-Místek was located in the so-called Sekerova Villa on Slezká Street, but in 1960 its relocation into the emptied spaces of the Frýdek Chateau began and it has stayed there ever since.

The Chateau Circle exposition offers interiors with artistic-historical exhibits; the nature and lifestyle of the region is documented in the exhibition "Beskydy – Nature and People". An exhibition "Frýdek – Marian Pilgrimage Place" is installed in the chateau chapel. The two formerly independent towns are commemorated in the exhibition "Frýdek and Místek". The Memorial of Ondra Lysohorský forms an independent exhibition.

Branch: Hukvaldy Castle

Nový Jičín Regional Museum

The museum had its predecessors – the so-called Kattauer School Museum in the period 1849-1875, and the Town Museum which was relocated to the Realschule building in 1887. Since 1940 the Renaissance Žerotín Chateau has been the site of the museum. In 1949 an extraordinary exhibition in Czechoslovakia, an exhibition of hats, was opened there. In 2000 this exhibition was reinstalled and extended with samples of period fashion of the 19th and 20th centuries and special hat collections. The chateau exposition shows life at the chateau from Baroque to Art Nouveau and covers the chateau's history. The museum and art exhibitions take place in the Knight's Hall and the New Gallery. The museum preserves valuable collections of Renaissance, Baroque and modern paintings, ethnographic collections, archeological findings, weapons, guild relics, old tins, coins, postcards, photographs, herbariums and rare animals.

Branches:

- Museum and Sigmund Freud Memorial Hall in Příbor
- Frenštát pod Radhoštěm Museum
- Bílovec Museum
- Klimkovice Museum
- Štramberk Museum
- J.A.Komenský Monument in Fulnek (national cultural monument)
- František Palacký Memorial in Hodslavice (national cultural monument)
- Johann Gregor Mendel Memorial in Hynčice
- Kunín Chateau
- Capuchin Monastery (Kapucínský klášter) with the church of St. Josef in Fulnek

